

1 ZÖLLNER ZETFON 120/330 K (low pitched)

for vessels with a length of less than 20 m
in accordance with the Colregs 1972, Annex III
approval No. DHI 49/24 P/83 and DHI 49/05 (inland navigation)
vibration, climatic and electric tests
design to drawing SP 4812-4
fundamental frequency: 330 Hz
intensity in 1/3rd-octave band a 1 metre: more than 120 dB
power supply: 24 V DC
maximum input: 100 Watt
input (only when sounding): 5 A
comprising:

- a) 1 ZETFON 70 s
diaphragm casing with incorporated moving coil and diaphragm,
weather-proof cast aluminum console,
with aluminum cover, sound horn made of aluminum
installation site: as high as practicable on the mast
approx. net weight 3.3 kg
- b) 1 Control and Amplifier Unit ZP 8-120/330
electronic sound generator and amplifier with protection against
cross-connection of terminals and special transformer;
installed in a weather-proof cast aluminum casing
with 3 cable glands, input: 120 Watt
installation site: wheel house (or cockpit)
approx. net weight 2.8 kg
- c) 1 Built-In Signal Key 4676 (water-protected)
design to drawing SP 4676-4, protection type IP 65 (water-tight)

Special Advantages

- 1) Low signal tone 330 Hz
- 2) Electronics and transformer within aluminum casing inside wheel house!
(Not on mast!)
- 3) Low weight on the mast: only 3.3 kg
- 4) Small dimensions: 200 Ø x 360 in length
- 5) Low power consumption

*As the absorption in dB per nautical mile is much higher at frequencies over 600 Hz than at frequencies by 300 Hz, we would recommend high-pitched signal units with more than 600 Hz only for yachts, sailing mostly in good weather conditions.

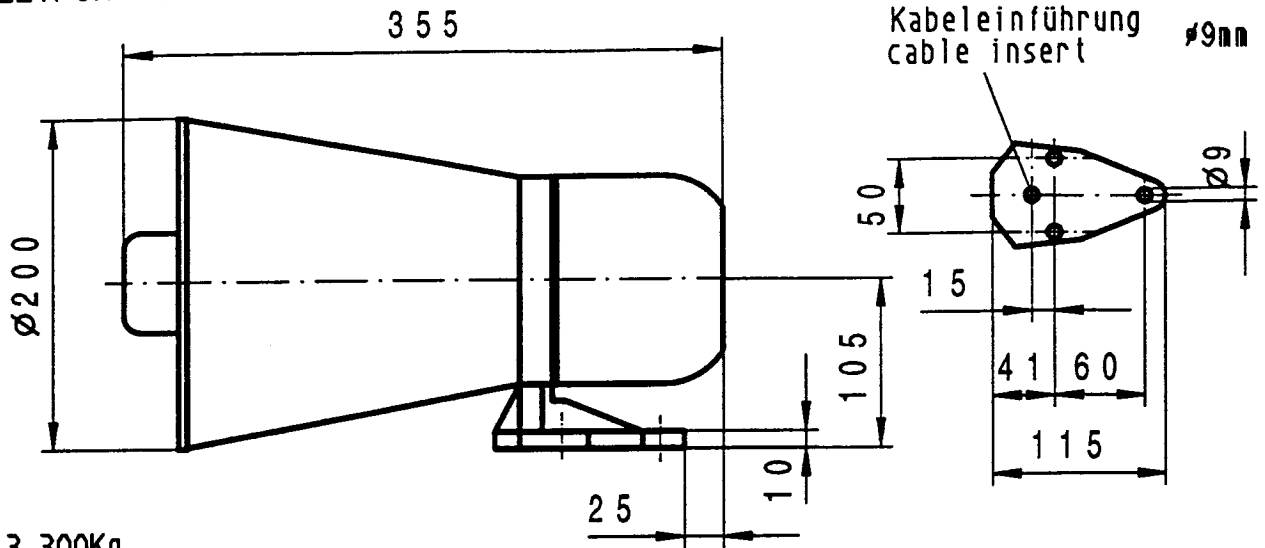


ZETFON Anlage (Tiefton)
ZETFON Equipment (low-pitched)

120/330 K
24V DC

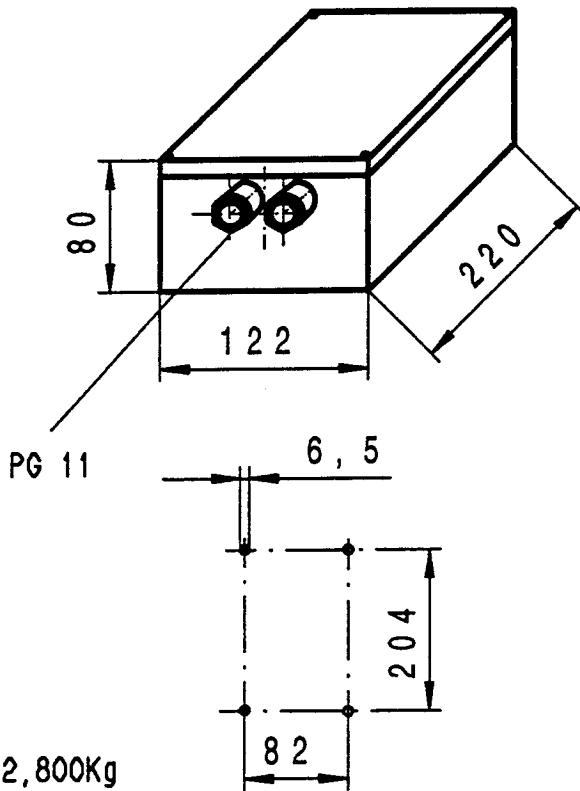
SP
4812-4

ZETFON 70s



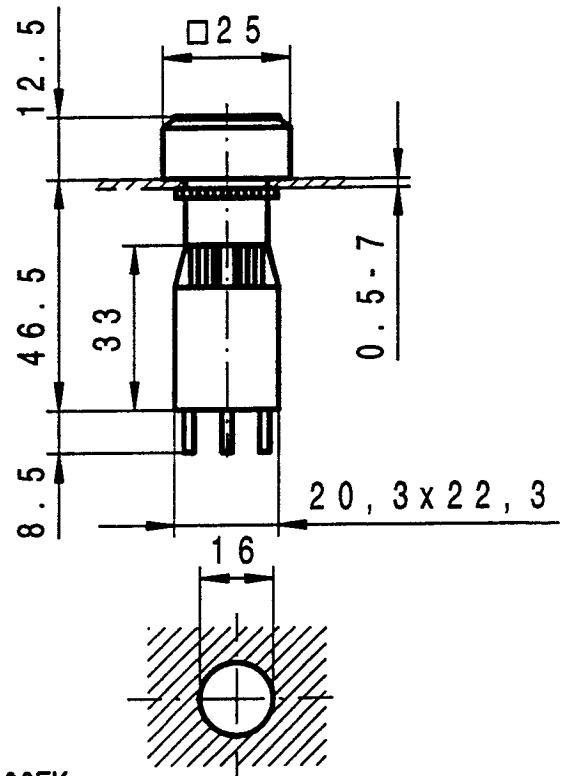
3,300Kg

Schalt-u. Verstärkereinheit ZP-8
Control-a. amplifier unit ZP-8



2,800Kg

Einbau Leuchttaster 4676
Illuminated built-in key 4676



0,025Kg

Einspeisung / feeding : 24V DC

Leistungsaufnahme / input for sounding : ca.100W

Schallpegel / sound level : > 120dB(T) 1m

Grundfrequenz / sound frequency : 330Hz

Anbauanweisung : Das ZETFON 70s ist ca.3° nach vorne geneigt anzubauen!

Direction for installation : The ZETFON 70s has to be installed bending

appr.3° to the front !

25.11.96 Sch.
28.05.98 Sch.

ZÖLLNER • KIEL

Änderung vorbehalten | Ersatz für Zeichnung v.25.2.93 | Subject to alteration | Replacement for drawing f.25.2.93

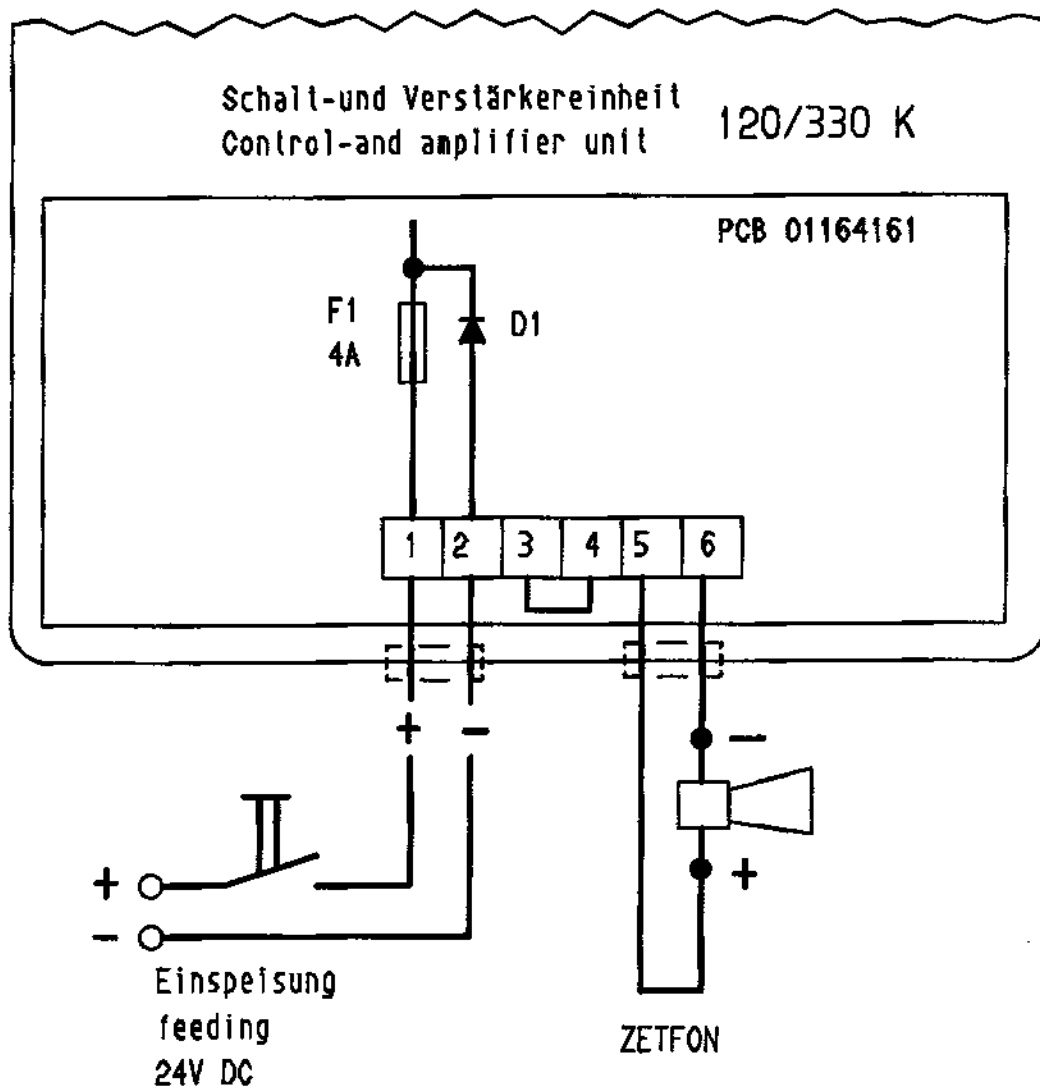


Wurde versehentlich die Batteriepolung am Anschluss der Schalt-und Verstärkereinheit vertauscht, so verursacht die Diode D1 das Auslösen der Sicherung F1.

Nach Umpolung und Ersatz der Sicherung ist die Anlage wieder betriebsbereit.

Should the battery poles be confused during connection to the control a. amplifier unit the diode D1 will cause the fuse F1 to blow.

Once the poles have been reversed and fuse replaced the appliance is again ready for operation.



Anderung vorbehalten!
subject to alteration!